



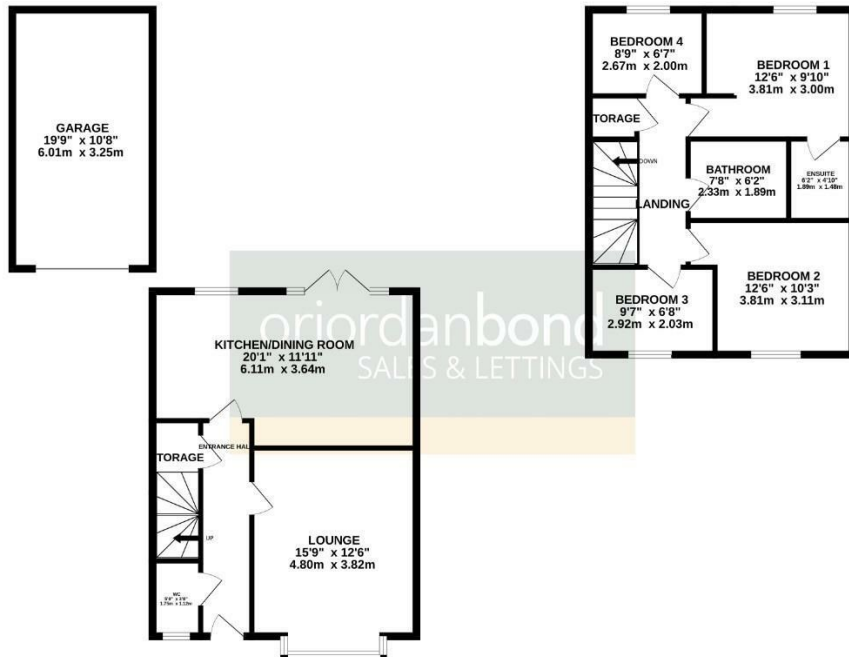
**Crestwood Close**  
Goldenash, Northampton

**oriordanbond**  
SALES & LETTINGS



GROUND FLOOR  
748 sq.ft. (69.4 sq.m.) approx.

1ST FLOOR  
527 sq.ft. (48.9 sq.m.) approx.



TOTAL FLOOR AREA: 1274 sq.ft. (118.4 sq.m.) approx.  
While every attempt has been made to ensure the accuracy of the floorplan contained here, measurements of doors, windows, rooms and any other items are approximate and no responsibility is taken for any error, omission or mis-statement. This plan is for illustrative purposes only and should be used as such by any prospective purchaser. The services, systems and appliances shown have not been tested and no guarantee as to their operability or efficiency can be given.  
Made with Metropac ©2025

## Crestwood Close

Goldenash  
NN3 8NR

PRICE £365,000

A four bedroom detached house on sought after Crestwood Close, ideal for families seeking a spacious and modern home. Built in 2016, this home offers open plan living, off road parking, solar panels and is in a quiet location.

The accommodation comprises entrance hall, cloakroom/WC, sitting room with bay window and an open plan kitchen/dining room. The first floor offers four great size bedrooms with en-suite to the master and a three-piece family bathroom. Externally are front and rear landscaped gardens with the rear being private with the added benefit of an artificial lawn. There is off road parking for two cars leading to a single garage. Further benefits include solar panels, uPVC double glazing and gas radiator heating. (A/1076/M)

### Additional information

- Council Tax Band: D
- Energy Efficiency Rating:

### Viewing

Viewing strictly by appointment – details below

### Disclaimer

O'Riordan Bond Estate Agents Limited has not tested apparatus, equipment, fittings or services and so cannot verify they are in working order. The buyer is advised to obtain verification from their solicitor or surveyor.

O'Riordan Bond Weston Favell Sales  
01604 784007

westonfavell@oriordanbond.co.uk

